

Short Communication Article

Open Access

# How you should comment on a mistake with a comrade. Must it always be troublesome?

Francisco R Breijo-Marquez\*

Full Professor, Department of Clinical and Experimental Cardiology, Boston University, USA

## Article Info

### \*Corresponding author:

Francisco R. Breijo-Marquez

Full Professor

Department of Clinical and Experimental

Cardiology

Boston University

USA

Ph: +02.673.517.585

E-mail: frbreijo@gmail.com

**Received:** April 10, 2018

**Accepted:** April 19, 2018

**Published:** April 26, 2018

**Citation:** Breijo-Marquez FR. How you should comment on a mistake with a comrade. Must it always be troublesome?. *Madridge J Intern Emerg Med.* 2018; 2(1): 54-55.

doi: 10.18689/mjiem-1000111

**Copyright:** © 2018 The Author(s). This work is licensed under a Creative Commons Attribution 4.0 International License, which permits unrestricted use, distribution, and reproduction in any medium, provided the original work is properly cited.

Published by Madridge Publishers

**Keywords:** Cardiac arrhythmias; Short PR interval; Wolff-Parkinson-White pattern. Interdisciplinary Discrepancies; Medical Ethics.

## Document

This possibility, far from being unusual, can be quite frequent. Sometimes and depending on the type of hospital, it can be very widespread. It is a difficult task when it comes to deciding what to do with the comrade. On the one hand, our ethical sense obliges us to give him a comment on the mistake. On the other hand, we don't want to hurt the professional esteem of the comrade in question.

What to do then?

The most sensible thing would be to comment on the error and discuss it amicably. Although on more occasions than we wished, hostility or resentment emerges in our comrade, and we can do nothing to get him out of his own mistake.

Taking advantage of such an error to obtain a more considerable prestige of one's own is not very ethical, but on many occasions, it is the most appropriate for the patient, since such an error can have undesirable effects, or condemn the patient to erroneous treatment triggered by a misdiagnosis.

Hence, the first thing we must do is to discuss it with the comrade. And if the latter does not heed our suggestions, we must communicate it to the head of the service and act accordingly.

By way of example, an adult 45-year-old Caucasian woman went to our hospital with a night-time heart palpitations crisis. She had had these crises more than four times in the last two years. Tachycardia had nothing whatsoever to do with exertion, unleashing itself at night, at rest. She denies taking any medication that would make us suspect the one causing such tachycardia.

She was diagnosed with supraventricular paroxysmal tachycardia generically.

In the emergency department, she has been treated with Adenosine: 6 mg in direct bolus. Tachycardia increased, and this fact was classified as Paradoxical effect to Adenosine.

As much in our experience as in that of many other authors, in Wolff-Parkinson-White syndrome [1, 2], the administration of Adenosine is not indicated, since the result may be worsening tachycardia.

In the following illustration, electrocardiographic tracing allows us to assess the presence of a delta wave. [Figures 1, 2, 3]

The PR interval is displayed with an acceptable length. But the delta wave is well manifested.

This electrocardiographic feature could represent a new variety of Wolff-Parkinson-White not described so far.

We told the comrade who diagnosed “supraventricular paroxysmal tachycardia” with “a paradoxical effect on the administration of Adenosine”.

The outcome of the dialogue was terrible.

In every branch of medicine, the patient must be the most important. This fact is logical and unquestionable.

But then what about the comrade? An eternal hostility?

Perhaps because the PR interval was of average length, the electrophysiological study was anodyne.

But the genetic study was positive for the PRKAG2 gene.

So we were in front of a variation of the WPW.

Now we have to study it in depth:

A WPW electrocardiographic pattern with normal PR interval and delta wave presence, positive for the PRKAG2 gene.

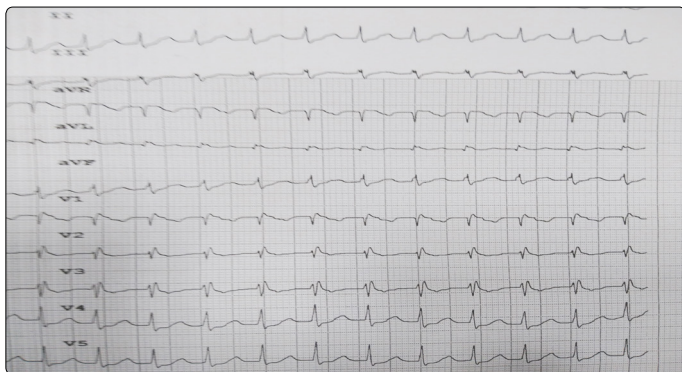


Figure 1. Electrocardiographic tracing in tachycardia crisis.

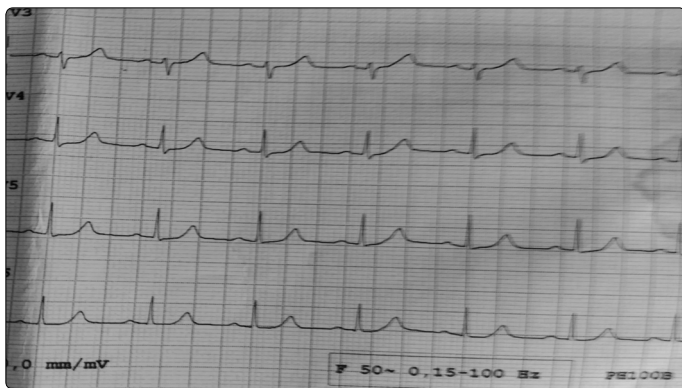


Figure 2. Detail on precordial leads after Amiodarone (since Adenosine produced higher tachycardia)

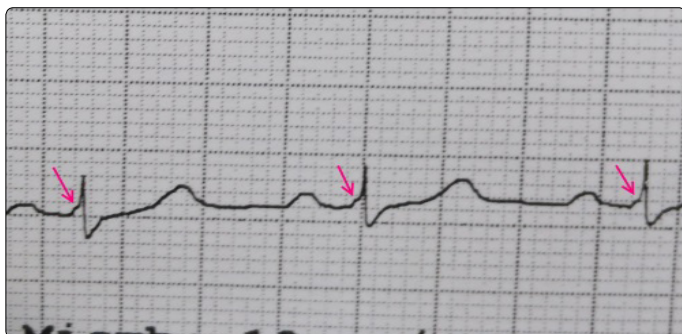


Figure 3. Detail increased over V2 in which the presence of delta waves can be assessed.

Another very significant example in which the same conditions of disagreement, multiple interdisciplinary conflicts, occurred was the following:

An 18-year-old young man. He lives on his own and denies taking any drugs. He went to the hospital emergency room for a specific syncope event that was witnessed by his girlfriend. The recovery was full spontaneously. The young man said that this type of events was frequent in him, especially in childhood. He was assessed in the emergency room by a cardiologist, giving as normal all the parameters that were assessed, including an electrocardiographic study. The young man was sent home without further precautions.

However, a short QT interval [3, 4] can be observed in your electrocardiographic tracing, as we can see in the image below.

They are just two examples. How much more will have happened?

So then

What should we be doing when we know that a comrade is making a mistake?

We can all be wrong, but recognizing our own mistakes is one more step towards the goodness of our diagnoses and, therefore, of our treatments and the lives of our patients.



Figure 4. Details of the resting ECG tracing. A shortened QTc interval is evident

## References

1. Wolff L, Parkinson J, Paul White D. Bundle-branch block with short P-R interval in healthy young people prone to paroxysmal tachycardia. *American Heart Journal*. 1930; 5(6): 685-705. doi: 10.1016/S0002-8703(30)90086-5
2. Munger TM, Packer DL, Hammill SC, Feldman BJ, Bailey KR, Ballard DJ, Holmes DR, Gersh BJ, et al. A population study of the natural history of Wolff-Parkinson-White syndrome in Olmsted County, Minnesota, 1953-1989. *Circulation*. 1993; 87(3): 866-73.
3. Gollob MH, Redpath CJ, Roberts JD. The Short QT syndrome: Proposed Diagnostic Criteria. *J Am Coll Cardiol*. 2011; 57(7): 802-812. doi: 10.1016/j.jacc.2010.09.048
4. Gaita F, Giustetto C, Bianchi F, Schimpf R, Haissaguerre M, Calo L, Brugada R, Antzelevitch C, Borggrefe M, Wolpert C. Short QT syndrome: pharmacological treatment. *J Am Coll Cardiol*. 2004; 43(8): 1494-1499. doi: 10.1016/j.jacc.2004.02.034